



MONTHLY MEMBERSHIP PROGRESS REPORT

District A 5

Results as of: 07/31/2018

GMT: CHRIS LEWIS

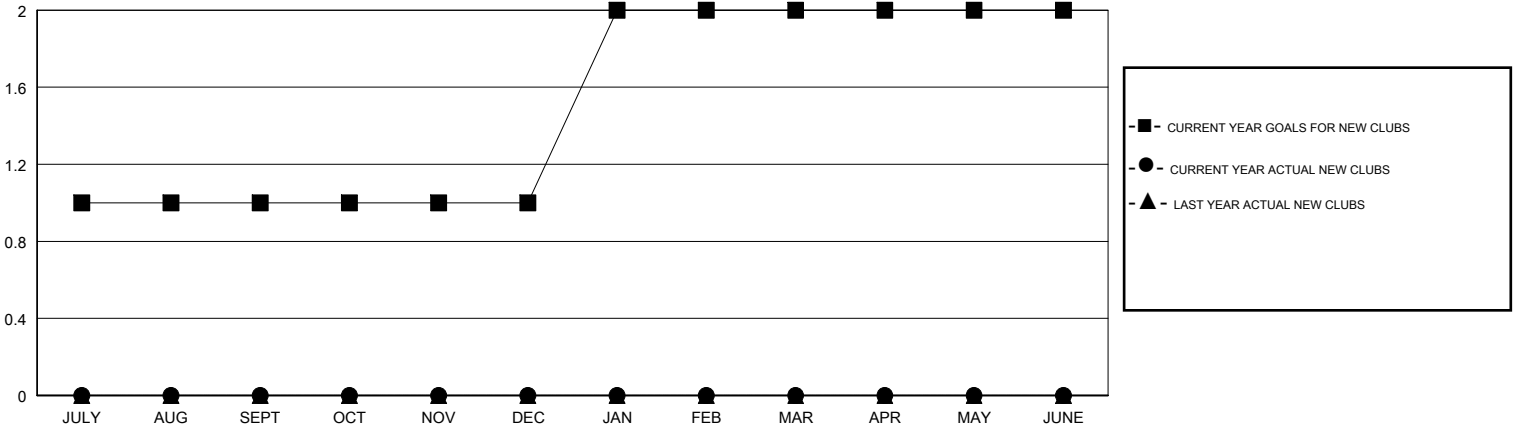
LOCATION ONTARIO

GMT CA

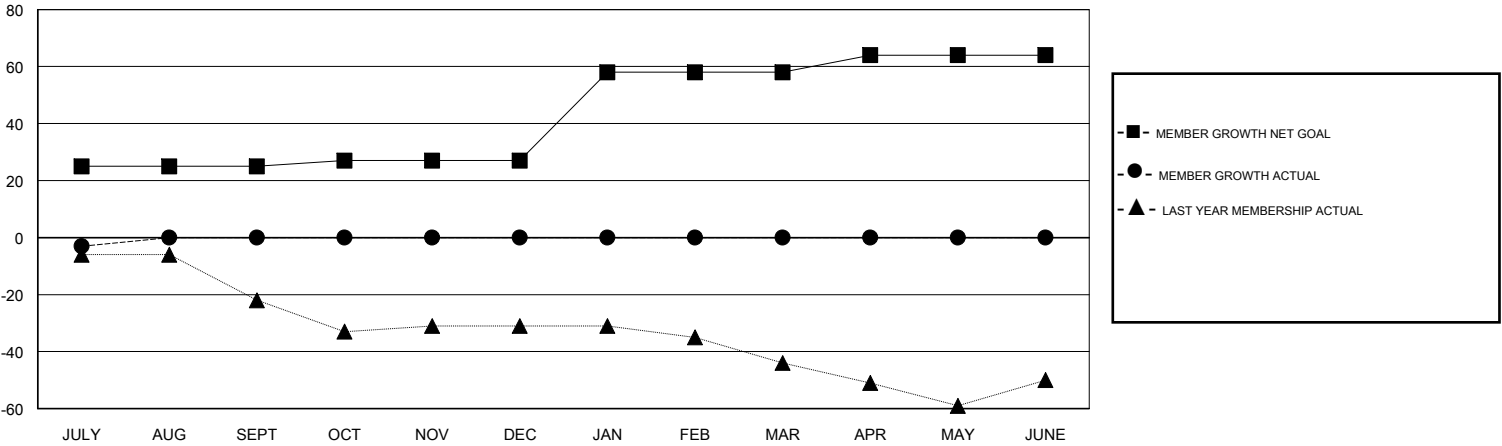
Clubs			
RESULTS FOR 2018-2019			
QUARTER	NEW CLUB GOAL	NEW CLUBS	DROPPED CLUBS
JULY/AUG/SEPT	1	0	0
OCT/NOV/DEC	0	0	0
JAN/FEB/MAR	1	0	0
APR/MAY/JUNE	0	0	0

Members			
RESULTS FOR 2018-2019			
QUARTER	MEMBER GROWTH NET GOAL	MEMBER GROWTH ACTUAL	DROPPED MEMBERS ACTUAL (including transfers)
JULY/AUG/SEPT	25	10	12
OCT/NOV/DEC	2	0	0
JAN/FEB/MAR	31	0	0
APR/MAY/JUNE	6	0	0

GOALS AND ACTUAL NEW CLUBS CUMULATIVE



GOALS AND ACTUAL MEMBERS CUMULATIVE



DROPPED CLUBS: 0	4 CLUBS OF 53 ADDED 1 OR MORE NEW MEMBERS	<u>GENDER DISTRIBUTION</u> MALE 708 (58.22%) FEMALE 508 (41.78%) Women Percentage Fiscal Year Goal: 48%
<u>DROPPED MEMBERS</u> DECEASED 1 CLUB CANCELLED 0 OTHER 11 TOTAL 12	CLICK HERE FOR CUMULATIVE MEMBERSHIP DATA	TOTAL FAMILY UNIT MEMBERS 222 FAMILY MEMBERS PAYING HALF DUES 112